

# Installation Guide



## WHERE ARE WE

Calle Dinámica N°1, Pol. Ind. Santa Rita  
08755 Castellbisbal, Barcelona SPAIN



## CALL US

Ph +34 918 315 425  
Fax +34 937 720 018



## DOWNLOAD



faro@lorefar.com  
www.faro.es



## FOLLOW US





## Technical specifications

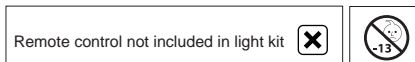
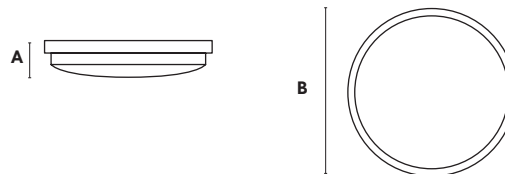
| light kit |   |
|-----------|---|
| material  | Metal + PC  |
| finished  | 33471K - white<br>33491K - grey<br>33492K - brown |

| power |         |
|-------|---------|
| V     | 220-240 |
| Hz    | 50      |

| Weight |      |
|--------|------|
| kg     | 0.28 |
| lb     | 0,62 |

## Light Kit for Pemba

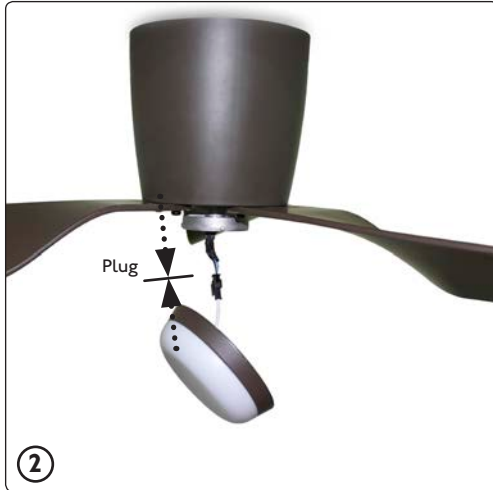
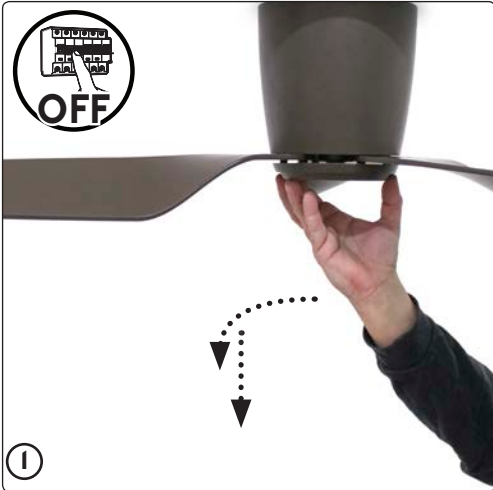
| sizes mm/inch |              |
|---------------|--------------|
| A             | 40 / 1,57"   |
| B             | Ø130 / 5.11" |



LIGHT  
ON / OFF

\* Remote control with  
ceiling fan

# Installation



**F A R O**  
B A R C E L O N A 